

KPR50L-36A-0-N-10

先导式减压阀

说明 DESCRIPTION

A cartridge-style pilot-operated pressure reducing/relieving valve
 先导式减压 / 溢流阀

工作 OPERATION

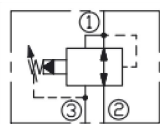
In its steady state, the valve allows flow to pass bi-directionally from ② to ①, with the spring chamber constantly drained at ③. On attainment of a pre-determined pressure at ①, the cartridge shifts to restrict input flow at ②, thereby regulating pressure at ①.

In this mode, the valve will also relieve ① to ③. Dead band (from reducing to relieving) pressure rise over reduced pressure setting:
 Non-flow condition: approximately 0.55 bar (8 psi); with flow: approximately 2.1bar(30psi).

在①口的压力达到弹簧设定的压力时,从②到①减压。弹簧腔内排到③口。
 当①口的压力超过预设定的压力时,②口渐渐关闭,①到③开始溢流。
 由减压转至溢流超设定压力的死区:无流动状态约 0.55bar,流动状态约 2.1bar。

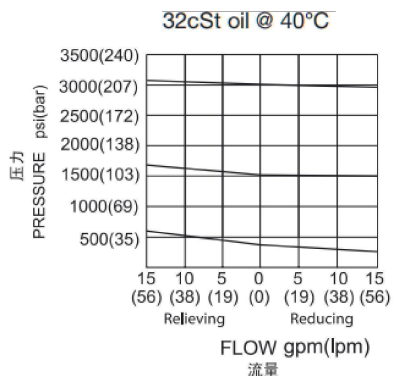
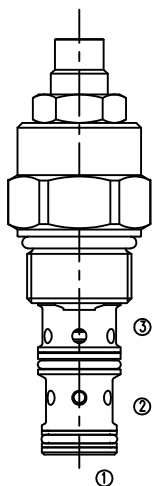
Pag1

符号 SYMBOL



技术参数 SPECIFICATIONS

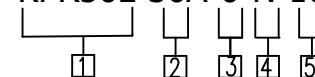
工作压力(Operating Pressure):	207bar
弹簧调压范围(Standard Spring Ranges):	6.9 to 27.6 bar, preset 预设定:13.8bar 10.3 to 103 bar, preset 预设定: 56bar 27.6 to 207 bar, preset 预设定: 103bar
最大流量(Flow Max):	56l/min.
温度(Temperature):	-40° F to +250° F(-40° C to +120° C)
插孔(Cavity):	VC10-3
油液(Fluids):	Mineral-based fluids with viscosities of 7.4 to 420 cSt.(矿物油粘度)
阀块材料(Body Material):	6061-T6 aluminum alloy rated to 207bar, Steel & Ductile iron rated to 350bar 6061-T6铝,允许使用最大压力207bar 钢和球铁允许使用最大压力350bar



Pag2

订货代号 TO ORDER

KPR50L-36A-0-N-10



1 功能

LPPR= 先导式减压 / 溢流阀
 Pilot-operated Pressure
 Reducing/Relieving Valve

2 规格 Size

36A=36A 规格

3 阀块油口

仅订购插装件 0
 SAE 6 (墨球) 6TD
 SAE 6 (钢制) 6TS

5 弹簧调压范围 Spring Ranges

4=100-400psi (6.9-27.6bar)
 Preset:200psi (13.8bar)
 15=150-1500psi (10.3-103bar)
 Preset:800psi (56bar)
 30=400-3000psi (27.6-207bar)
 Preset:1500psi (103bar)

4 密封件

丁腈橡胶 (标准) N
 氟橡胶 V

安装尺寸 INSTALLATION DIMENSIONS

