

KRES50-30G

螺杆式 插装式减压阀

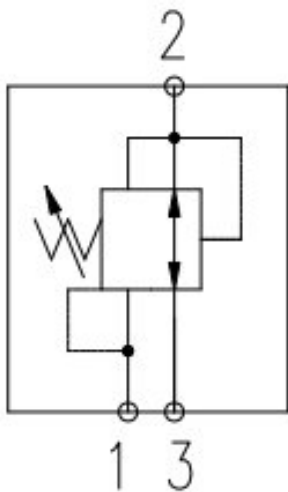
说明 DESCRIPTION

designed to act as a pressure regulating device for secondary circuits.
用作二次回路的压力调节装置。

工作 OPERATION

In its steady state, the PRES50-30 allows flow to pass bidirectionally from port 3 to port 2 with the spring chamber constantly drained at port 1. Upon attainment of a predetermined pressure at port 2, the cartridge shifts to block flow at port 3, thereby regulating pressure at port 2. In this mode, the valve will also relieve port 2 to port 1 at a variable value over the set reducing pressure.
在稳定状态下，KRES50-30G允许流体从端口3双向通过端口2，弹簧腔室在端口1不断排水。
在端口2达到预定压力后，转移块到端口3阻止流动，从而调节压力在端口2. 在这种模式下，阀门也会以一个可变值将端口2释放到端口1设置减压。

符号 SYMBOL

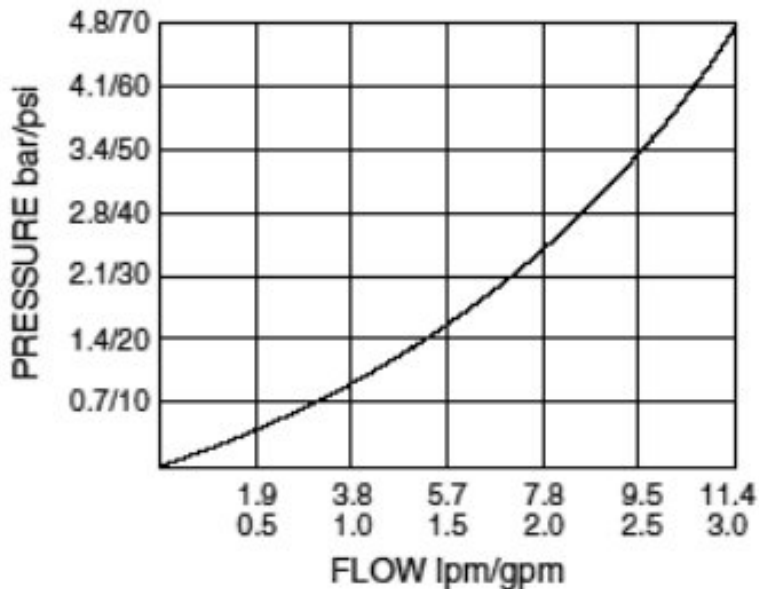
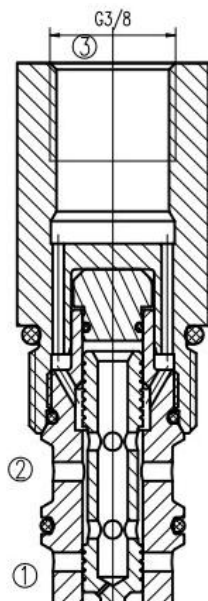


技术参数 SPECIFICATIONS

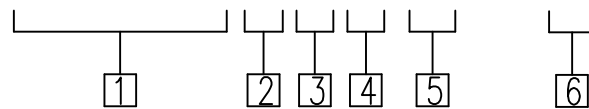
工作压力(Operating pressure):	350bar
流量(Flow):	11.4l/min.
内部泄漏(Internal leakage):	3l to 55.2 bar (450 to 800 psi) At 0.95 lpm (0.25 gpm)
出厂预设压力(Factory default Pressures):	29.5-31bar
温度(Temperature):	-40° C to +70° C
推荐油液的清洁度(Recommended degree of fluid contamination):	18/16/13 per ISO 4406
过滤(Filtration):	参考过滤要求 (Reference filter requirements)
油液(Fluids):	Mineral-based fluids with viscosities of 7.4 to 420 cSt. (矿物油粘度)
插孔(Cavity):	VC98-3

压力-流量曲线 Pressure-flow curve

Pressure Drop vs. Flow;3 to 2
32cSt/150 sus oil at 40°C



KRES50-30G-0-N-08 / 04.5



1

公司代码

Company code

4

密封件 Sealing ring

N 丁氰橡胶 (标准型)

BUNA N (Std.)

V 氟橡胶 Fluorocarbom

2

牙型 Tooth form

G=G牙

5

弹簧范围 Spring range

31.0-55.2bar(450-800psi)

3

0

0= 只订插件

0=Order plug-ins only

6

压力设定 Pressure setting

31.0bar(450 psi)

安装尺寸 INSTALLATION DIMENSIONS

